


LINXS

LUND INSTITUTE OF ADVANCED NEUTRON
AND X-RAY SCIENCE

An advanced study institute to be located in
Science Village Scandinavia



Image and design by Basics (www.basics.land)

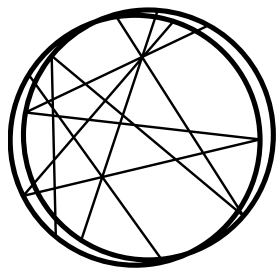
An aerial photograph of a modern research campus. The foreground and middle ground are filled with numerous light-colored, rectangular building blocks of varying heights, interspersed with green lawns and trees. In the background, a dense urban skyline is visible under a hazy, golden-hour sky. A long bridge spans a body of water in the far distance. Three white circular callouts with thin white lines pointing to specific buildings are located on the right side of the image. A semi-transparent white box containing text is positioned on the left side.

ATTRACTING THE BEST IN THE WORLD TO BOOST RESEARCH AT LARGE SCALE FACILITIES

LINXS

MAX IV

ESS



LUND INSTITUTE OF ADVANCED NEUTRON AND X-RAY SCIENCE

VISION

SETTING THE STAGE FOR OPTIMAL USE OF MAX IV AND ESS

We are dedicated to becoming the nucleus for national and international scientific activities in Science Village Scandinavia situated between MAX IV and ESS.

LINXS will develop an international competence centre, research networking hub and think-tank for the education of future generations of neutron source and synchrotron users.

The institute will be based around a stream of highly motivated world-leading scientists who are invited for short-term focused topical research visits in the spirit of a Kavli institute.

LINXS

MISSION:

PROMOTE

science and education focusing on the use of neutrons and x-rays in research and development.

EDUCATE

future users of ESS, MAX IV and other major research infrastructures.

BECOME

the nucleus for local, national and international activities in Science Village Scandinavia and a think-tank, which initiates new ideas and themes.

GOALS:

ATTRACT

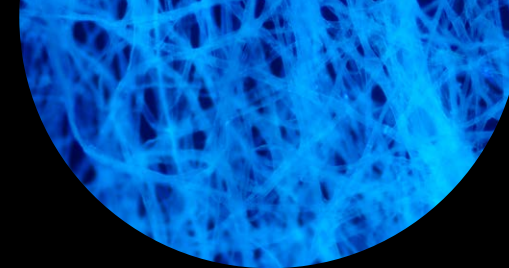
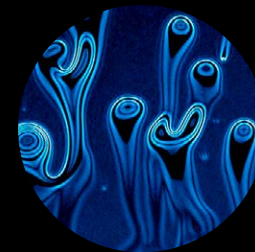
world leading scientists for short-term focused research visits in a lean Kavli institute model.

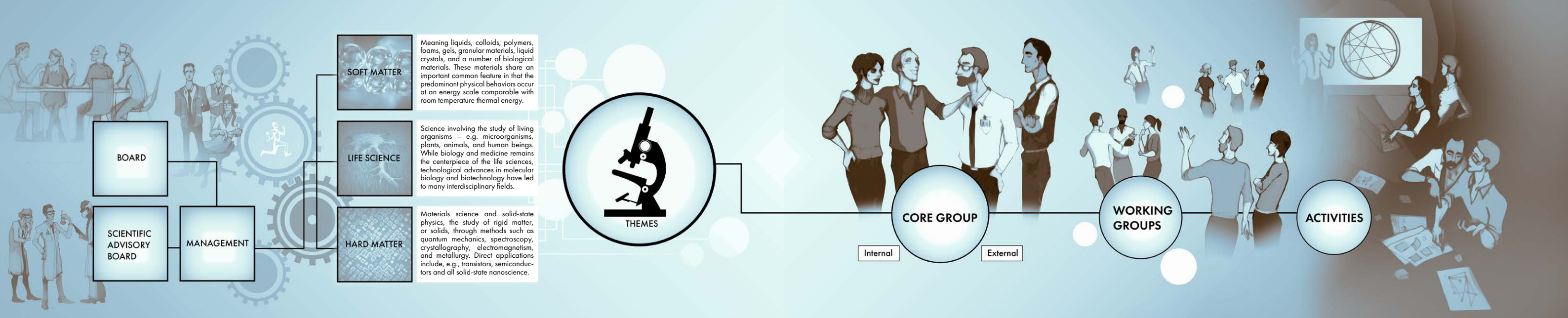
INVIGORATE

the dialogue between academia and society in all aspects of neutron and x-ray large scale research facilities.

CREATE

international networks and enhance the visibility of Sweden internationally in this area.





Organisation

LINXS is currently a University Centre with a Management Group and an associated Scientific Advisory Board. The Management Group answers to the Board of Directors, which can have a Strategic Advisory Board attached. The Board level makes strategic decisions, while the Management Group makes scientific decisions. The Scientific Advisory Board issues recommendations to the Management Group on Themes and Management decides.

Focus Areas

LINXS works under long-term strategic focus areas reflecting broad research priorities. These are: Soft Matter, Life Science and Hard Matter. These are areas where it is felt that a lot of progress can be made in opening up specific fields either by enhancing existing methods using synchrotrons and neutron facilities, opening up for users in new fields or doing both simultaneously.

Themes

Themes are defined under (one or more) of the focus areas. These are limited-term activities (running about 1-3 years) that will bring research communities together. A theme is usually connected to one or more of the focus areas. LINXS solicits input on the themes and their content from the community that contributes to its funding. Themes are suggested via online proposal submission.

Core Group

A theme is governed by a core group composed of prominent external and local researchers. One of the core missions of LINXS is to bring external excellence in to work with local and national researchers. The core group usually has as a member one of the management group. The core groups suggests to the management group how resources will be allocated for that theme.

Working Groups

Under the core group there are working groups working on specific activities, these range from conferences, workshops and schools to specific research programmes aided by external research fellows. Working groups are also formed via an Application procedure, though this is shorter and more quickly evaluated than that for themes.

Activities

Each working group has a palette of budgeted Activities to draw from that can be useful to its defined goals. The nominal budget enables planning of the scientific scope in relation to the total LINXS budget. The activities can be: Conferences, Research Programmes, Workshops, Hackathons, Sabbaticals, Schools, Seminars and Training & Outreach, for instance.

EVOLUTION

RAMPING UP of workshop and networking activities					
3 THEMES RUNNING					
Interim location established	Regular hosting activities	CALL FOR NEW THEME		Permanent location in SVS established	Steady state operations reached at 16-24 MSEK/year
First call for LINXS postdoctoral fellows	Opening for additional member organisations	Long term guest housing solution		Long term funding secured	
2018	2019	2020	2021	2022	2023
Max IV 3 BEAMLINES available for user operations			Max IV 14 BEAMLINES available for user operations		ESS Start of Users Operations at ESS



FAQ

How can my organisation become a partner in LINXS?

During 2019-2020 we are looking at a membership/partnership model. A membership would give access to the premises and environment of LINXS on a regular basis during the year, while a partnership would also include the member organisation in decision-making bodies and make the members of that organisation eligible for internal fellowships. Please contact the LINXS Management for more details.

Does LINXS fund individual research projects?

Not in the traditional sense. LINXS supports collaborative activities that can increase the user base of major research infrastructures. The key is that the efforts should span several disciplines and be useful to a broad community. However, LINXS does reserve resources to fund targeted research efforts, including postdocs, where the work is deemed to have significant impact on bringing in new research communities and ideas.

How can I join LINXS as a researcher?

Anyone with interest in the science of LINXS can participate in its activities. LINXS organises its work in Themes and Working Groups connected to these. If you wish to get involved in a current activity, you can contact the corresponding Core Group or Working Group members. As a member of a full partner organisation you can propose new Themes and Working Groups.

Where is LINXS located?

LINXS is and located at Ideon in Lund during the ramp-up phase. From about 2021 LINXS will be located in Science Village Scandinavia - the dynamic science hub right between MAX IV and ESS.

How can I benefit from LINXS?

LINXS provides a community, supports bringing together leading international expertise to advance the next generation of research that can be done with synchrotrons and neutron sources. If you think that such facilities can benefit your work - no matter if you are an existing or prospective user - LINXS is for you. LINXS can, e.g., fund workshops, sabbaticals, hackathons and targeted research efforts.

How is LINXS funded?

Right now LIXS is partially funded by a grant from the Crafoord foundation and by Lund University including the Faculties of Science, Engineering and Medicine. LINXS has an annual budget of about 9-11 MSEK and has a target budget of 16-24 MSEK for steady-state operations.

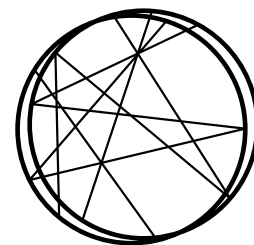
Is LINXS just for Lund University?

LINXS has the ambition to become an independent institute with national and international partnership and funding. Lund University is incubating LINXS, but the organisation is ultimately meant to be directed by the partner organisations together and an agreed upon charter. This will determine the long-term organisational form.





The Crafoord Foundation
ESTABLISHED BY HOLGER CRAFOORD 1980



LINXS

LUND INSTITUTE OF ADVANCED NEUTRON
AND X-RAY SCIENCE

Visit us at
www.linxs.se



LUND
UNIVERSITY